



TOMORROW'S CAPITAL

Healthy Ageing Campus

Zernike Campus

Campus Groningen is the driver of innovation of the Northern Netherlands, where more than 70,000 people come together every day. It is the fastest growing Campus in the Netherlands, which in less than 6 years has grown into one of the largest campuses of national importance. Our campus has a unique concentration of knowledge institutes and companies. We work closely together with the ecosystem to create real impact.

Upgrade Zernikelaan: a place to stay and a place to meet

After three years of hard work the Upgrade Zernikelaan is complete. With the Upgrade Zernikelaan project, the University of Groningen, Hanze University of Applied Sciences Groningen and the municipality invested heavily in the quality of accommodation and road safety. This has given the atmosphere and appearance of Zernike Campus a boost.



Polyganics provides room for growth with state-of-the-art facility on Campus

A few years ago, the medical technology company started developing a plaster that, after operations, prevents leaks in the brain and also dissolves automatically in the body. Based on the ambition to become the 'duct tape' for the entire human body, Polyganics continues to attract extra people and develop new products.

New medicine strategy for Europe from the Netherlands (PharmaNL)

Application submitted to National Growth Fund

The Northern Netherlands offers essential knowledge and infrastructure in the Netherlands' new medicine strategy. A new medicine strategy for the Netherlands and Europe from the PharmaNL consortium: we are able to produce medicines in a much more sustainable and greener way.



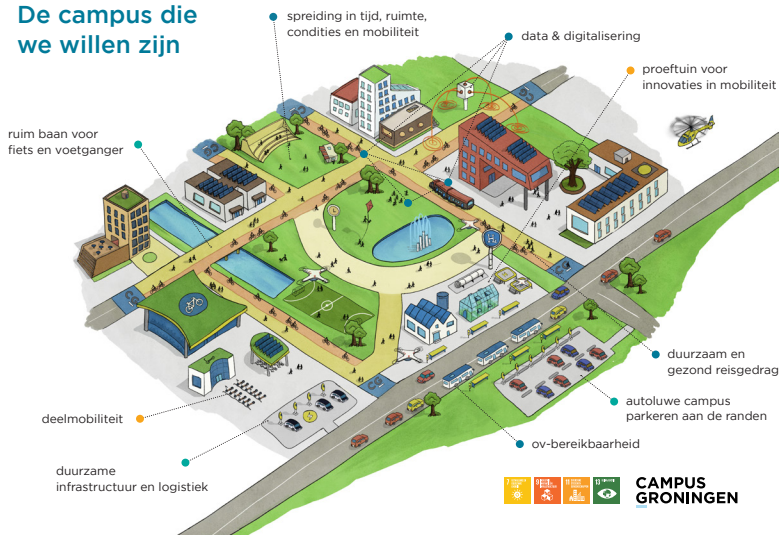
Accelerate growth and increase success

Increase of **1.000m²** incubator and **accelerator** facilities

There are 245 companies, 3 knowledge institutes and more than **50.000 students** on Campus (2021)

Increase of **10.788m²** corporate housing (m² bvo)

De campus die we willen zijn



Towards a smart, sustainable and innovative Campus

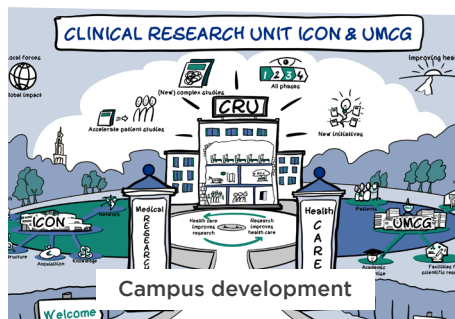
The Mobility Action Agenda 2022-2030 Campus Groningen has been published. In addition to ongoing projects such as a quality manual, the pilot with CommShare shared cars and shared bicycles, the Campus has joined forces with partners for a Mobility Action Agenda for the coming years.

CAMPUS GRONINGEN

245 companies

23.548 jobs

69.401 students
in Groningen city



Two million for development new diagnostics in the Open Diagnostics Ecosystem

The Open Diagnostics Ecosystem provides access to a network of companies, knowledge institutions, healthcare partners and development facilities that use their knowledge and skills to develop new techniques for making a medical diagnosis.

Unique collaboration UMCG and ICON: Clinical Research Unit to accelerate development of new medicines

The aim is to accelerate the development of new medicines and treatment methods. It is a unique collaboration in Europe. The unit will be built on the Healthy Ageing Campus, near the UMCG.

Realization of new meeting places: picnic benches and chessboards, a nice boulevard at the Duissenberg pond and space to meet, eat and work in Space Workcafe

Campus Groningen offers space for growth. In total **15 new companies** towards the campus in 2021

Growing online impact: avg. **80 new LinkedIn followers** per month

Visible infrastructural **living lab projects**: including the mobile charging station of EVoltify, innovations at Zernikelaan and the Points of View

Campus Groningen **welcomes** in 2021 a.o. EnableMi, Detact Diagnostics, QDI Systems and Reperio Medtech

'**Campus Menu**' developed with Campus Mobility Portal, integral shared mobility system and CampusTV as services

An average of **850** visitors per day on campus.groningen.nl

Campus Groningen is made possible by:

